

**NEW !**  
IP 67 Protection

## SPECIFICATIONS:

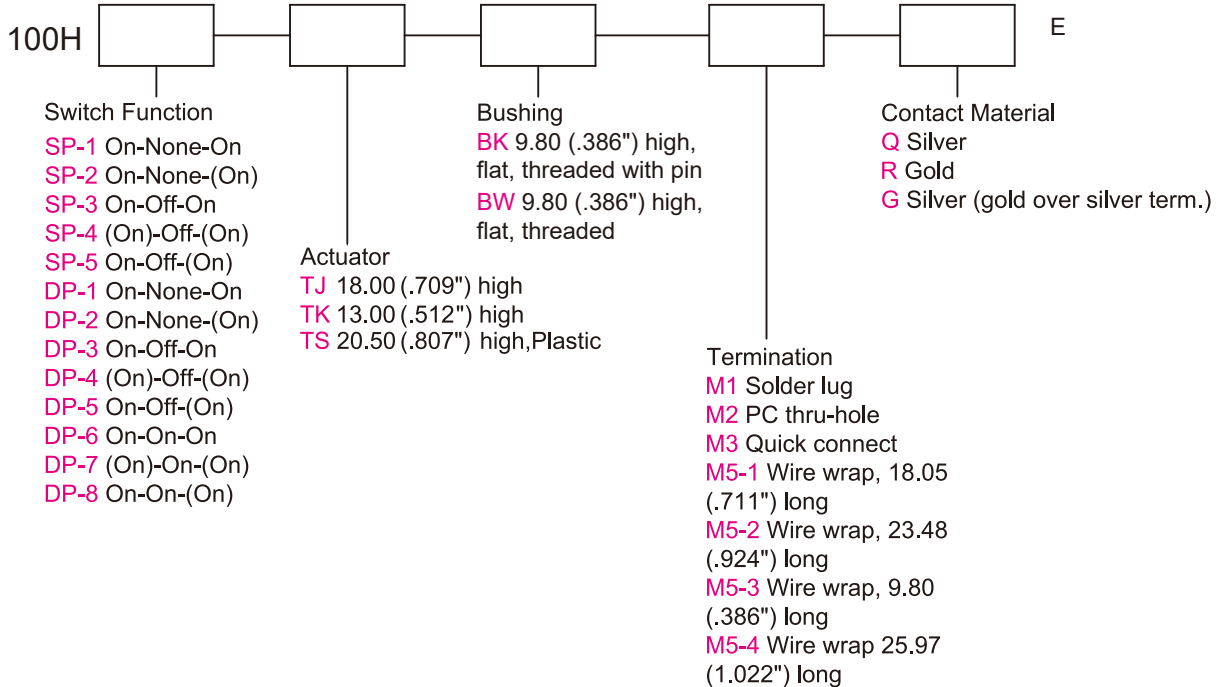
CONTACT RATING: Refer to "Contact Material Options" for more info.  
ELECTRICAL LIFE: Min. 50,000 make-and-break cycles at full load.  
CONTACT RESISTANCE: 10m-ohms max. initial @2-4VDC  
100mA for both silver and gold plated contacts.  
INSULATION RESISTANCE: 1,000M-ohms min.  
DIELECTRIC STRENGTH: 1,500VAC for 1 minute.  
OPERATING TEMPERATURE: -30°C to +85°C

## MATERIALS:

CASE: Diallyl phthalate(DAP)(UL 94V-0).  
TOGGLE HANDLE: Brass, black finish with o-ring sealed.  
BUSHING: Brass, black finish with o-ring sealed  
EXTERNAL SHELL: FR52 (UL 94V-0).  
TERMINAL SEAL: Epoxy.

If your preferred product configuration is not shown, please contact our sales representative for custom design.

## HOW TO ORDER SYSTEM



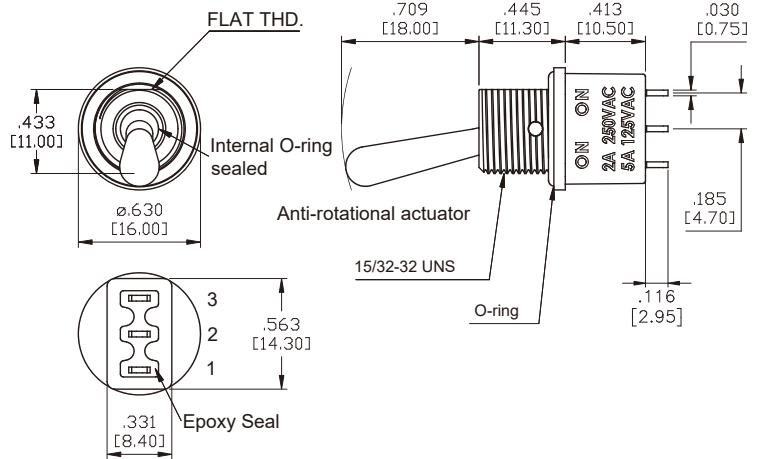
## SPDT



Model No.	Switching Position		
SP-1	ON	NONE	ON
SP-2	ON	NONE	(ON)
SP-3	ON	OFF	ON
SP-4	(ON)	OFF	(ON)
SP-5	ON	OFF	(ON)
Term. Comm.	2-3	OPEN	2-1

Schematic

2Comm.



## DPDT



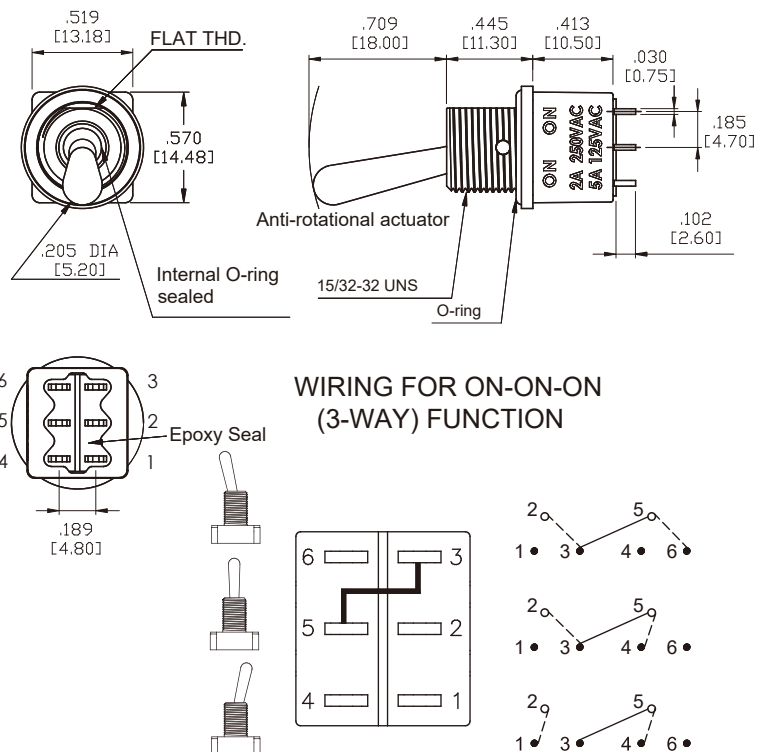
Model No.	Switching Position		
DP-1	ON	NONE	ON
DP-2	ON	NONE	(ON)
DP-3	ON	OFF	ON
DP-4	(ON)	OFF	(ON)
DP-5	ON	OFF	(ON)
Term. Comm.	2-3,5-6	OPEN	2-1,5-4

Schematic

2Comm.

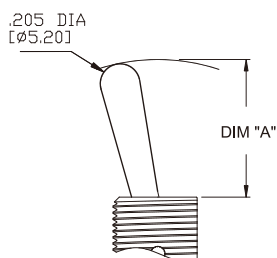


5Comm.



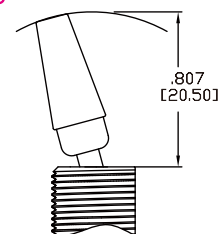
## ACTUATOR OPTIONS

### TJ&TK



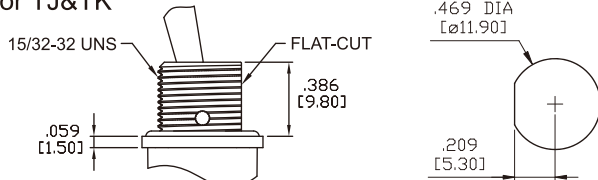
OPTION CODE	DIM. "A"
TJ	.709 [18.00]
TK	.512 [13.00]

### TS

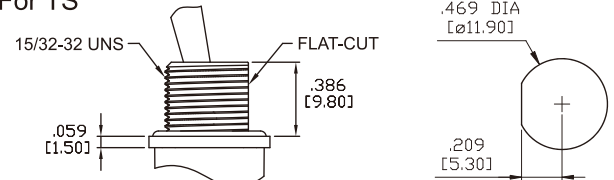


## BUSHING OPTION & MOUNTING

### BK For TJ&TK



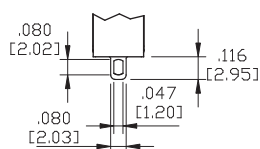
### BW For TS



( ) = MOMENTARY

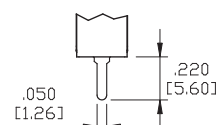
## TERMINATION OPTIONS

### M1 STD. SOLDER LUG



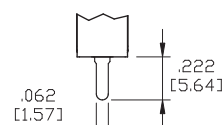
THK .030 [0.75]

### M2 PC THRU-HOLE



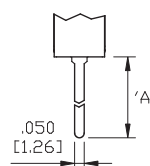
THK .030 [0.75]

### M3 QUICK CONNECT



THK .030 [0.75]

### M5 WIRE WRAP



THK .030 [0.75]

OPTION CODE	DIM.'A'
M5-1	.711 [18.05]
M5-2	.924 [23.48]
M5-3	.386 [9.80]
M5-4	1.022 [25.97]

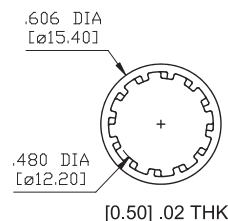
## NUT



15/32-32UNS



## LOCK WASHER



## CONTACT MATERIAL OPTIONS

Coding	Contact Material	Terminal Plating	Rating	Agency Approvals
Q	Silver <sup>1</sup>	Silver plated <sup>1</sup>	5Amps @ 125VAC or 28VDC 2Amps @ 250VAC	RI <sup>®</sup> IP67
P		Tin plated <sup>5 7</sup>		
R	Gold <sup>2</sup>	Gold plated <sup>4</sup>	0.4VA max @ 20V max (AC or DC)	IP67
K		Tin plated <sup>5 6</sup>		IP67
G	Silver <sup>1</sup>	Gold over silver <sup>3</sup>	5Amps @ 125VAC or 28VDC 2Amps @ 250VAC	RI <sup>®</sup> IP67

1. Movable Contact / Terminals: Copper alloy, silver plated.
2. Movable Contact: Copper alloy with gold plated over nickel plated.
3. Terminals: Silver plated with outer layer in gold plating.
4. Terminals: Copper alloy, with gold plated over nickel plated.
5. Outer Terminals: Copper alloy with pure tin plated.
6. Terminal Contact: Gold plated over nickel plated.
7. Terminal Contact: Palladium nickel alloy (or Silver) plated.

\* P, K not available with M1 and M3 terminals

\* 6Amps (Movable Contact: coin silver, silver plated) available to model ON-NONE-ON without UL approval